



SUSPENDED FLOORING

Top Sheet system



This Top Sheet system consists of an EPS infill panel and top overlay sheet. The infill panels (EPS) are installed between the prestressed concrete beams and the top sheet is laid over the beams and infill panel to complete the insulation process.

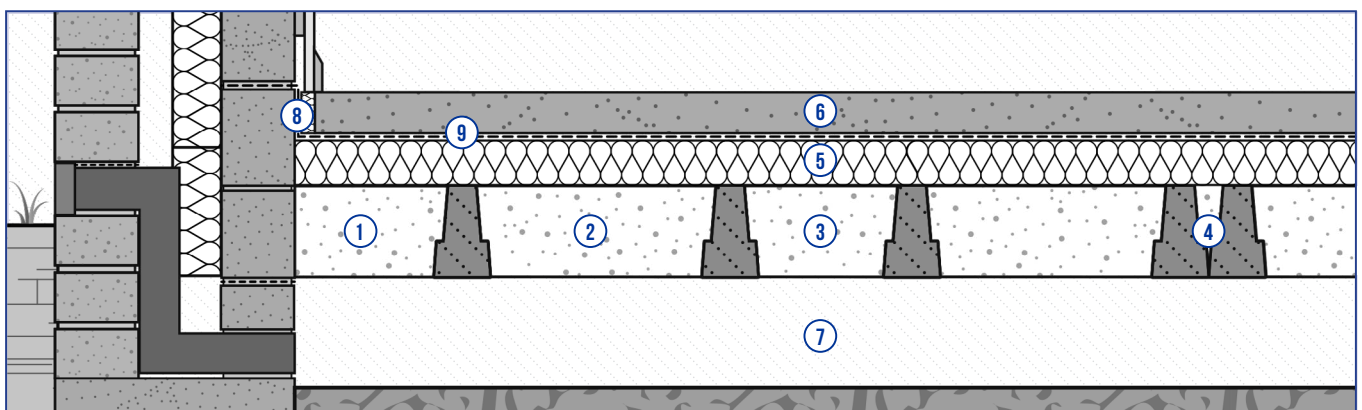
This system not only increases thermal performance by reducing cold bridging of the concrete beams but also reducing the overall finished build up floor depth when compared with traditional beam & block. By replacing the traditional concrete block both installation and overall costs of the floor construction is greatly reduced. This top sheet suspended floor system is designed to fit tightly in-between the pre-cast concrete beams in the floor. The infill panels are designed to span the depth of the concrete beam however the top sheet depth can be adjusted to suit the required

U-Value of the floor. Flexible U-Value performance is achieved by using our extensive range of EPS grades and top sheet depth combinations resulting in the most effective method of floor insulation.

The insulated floor system is designed to give increased thermal performance to the floor while lowering construction costs, by decreasing overall floor depth. Helping to reach current building regulations without the extra costs of excavation & waste removal.

Typical Build Up

- | | | |
|-----------------------|----------------------|------------------------|
| ① EPS Starter Infill | ④ Double Beam | ⑦ Min 150mm void |
| ② EPS Standard Infill | ⑤ EPS 150 Top Sheet | ⑧ Perimeter Insulation |
| ③ EPS Half Infill | ⑥ Structural Topping | ⑨ Damp Proof Course |



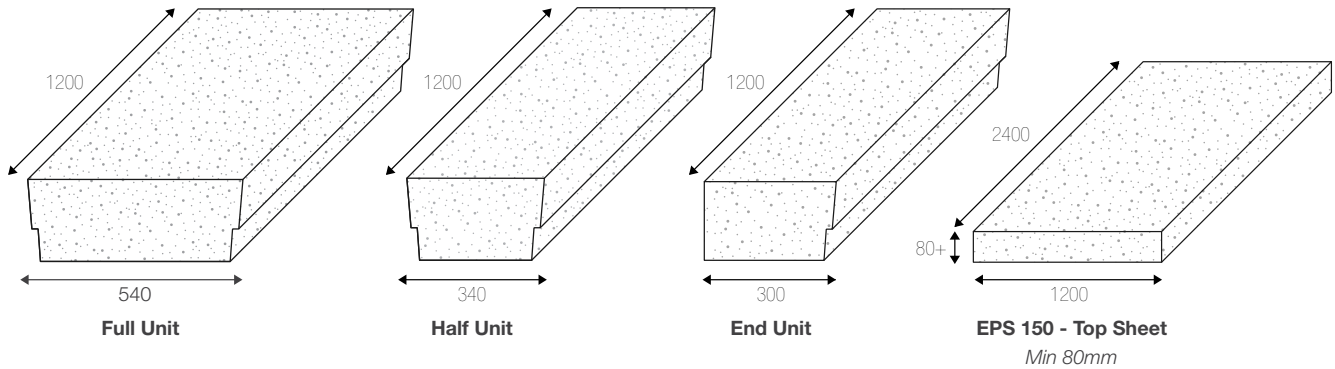


SUSPENDED FLOORING

Top Sheet system



Top Sheet System Components



Top Sheet System Typical U-Values

155 Beam

P/A - Achieved U-Value (w/m ² K)		0.2	0.4	0.6	0.8
(Min) 80mm Top Sheet	White (EPS 100)	0.14	0.16	0.17	0.18
	Grey (EPS 100)	0.13	0.14	0.17	0.17
120mm Top Sheet	White (EPS 100)	0.12	0.14	0.14	0.15
	Grey (EPS 100)	0.11	0.12	0.12	0.13
140mm Top Sheet	White (EPS 100)	0.11	0.13	0.13	0.13
	Grey (EPS 100)	0.10	0.11	0.11	0.12

225 Beam

P/A - Achieved U-Value (w/m ² K)		0.2	0.4	0.6	0.8
(Min) 80mm Top Sheet	White (EPS 100)	0.13	0.15	0.15	0.16
	Grey (EPS 100)	0.11	0.12	0.13	0.13
120mm Top Sheet	White (EPS 100)	0.11	0.12	0.13	0.13
	Grey (EPS 100)	0.10	0.10	0.11	0.11
140mm Top Sheet	White (EPS 100)	0.10	0.11	0.12	0.12
	Grey (EPS 100)	0.09	0.10	0.10	0.10